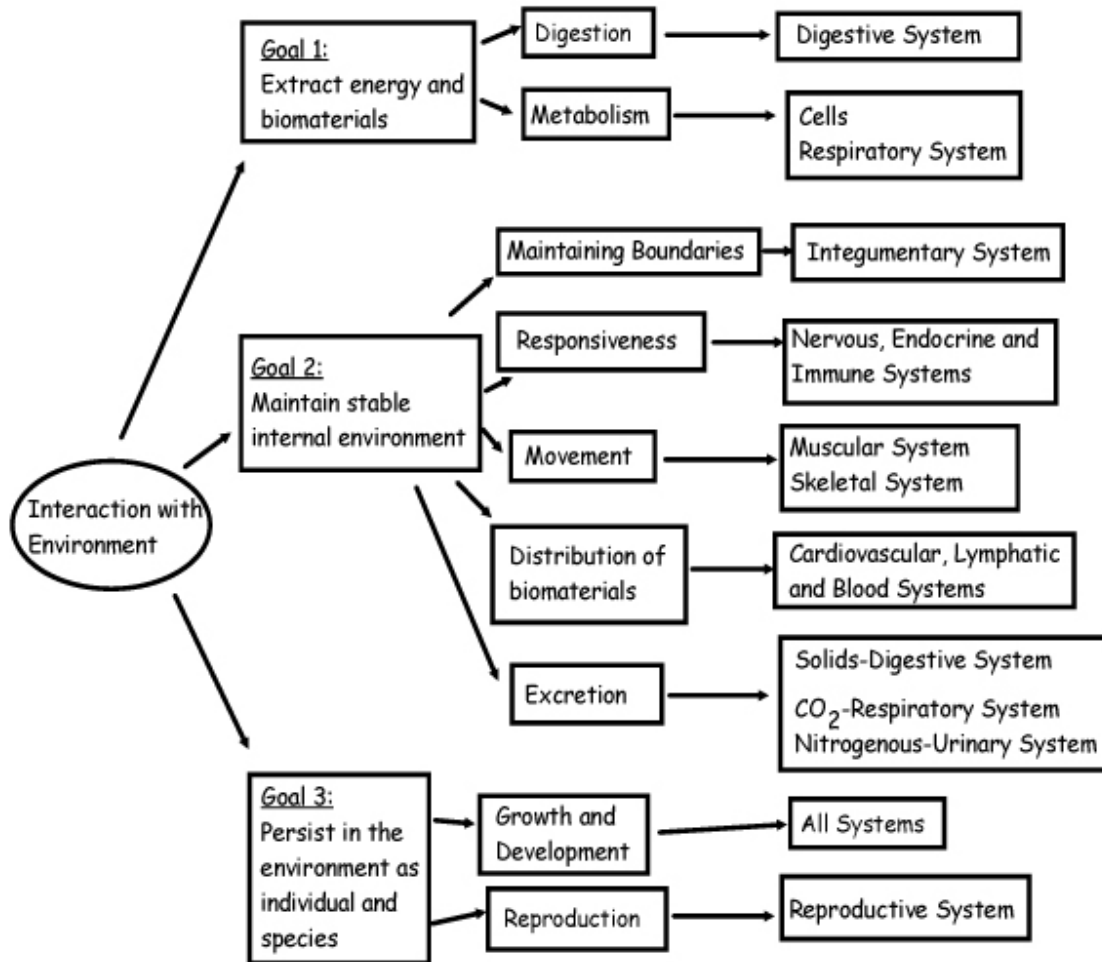


Anatomy and Physiology: Study Guide for Test on (0) Orientation to the Class

Material From Section 0-1: Syllabus

Please be able to complete the following chart outlining the goals of interaction with the environment, biologic functions that accomplish this goal, and body systems that accomplish these functions.



List the basic features of a homeostatic control mechanism:

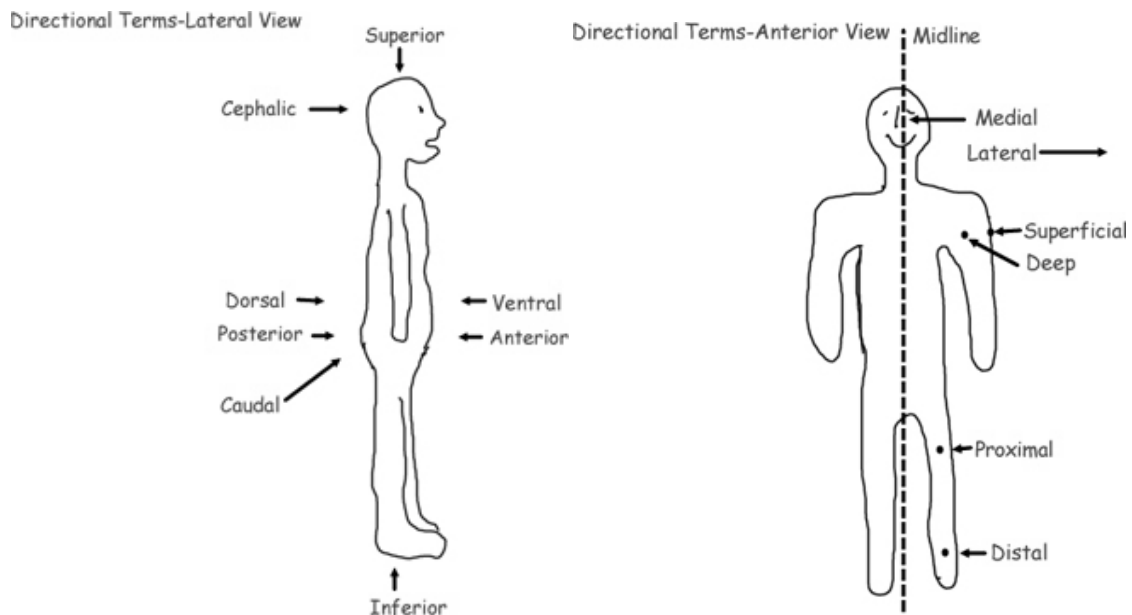
- stimulus causes imbalance
- receptors detect imbalance and send information to the control center
- control center integrates information, makes a decision, sends information to effectors
- effectors restore balance

Material from Section 0-2: Basic Anatomic Terminology

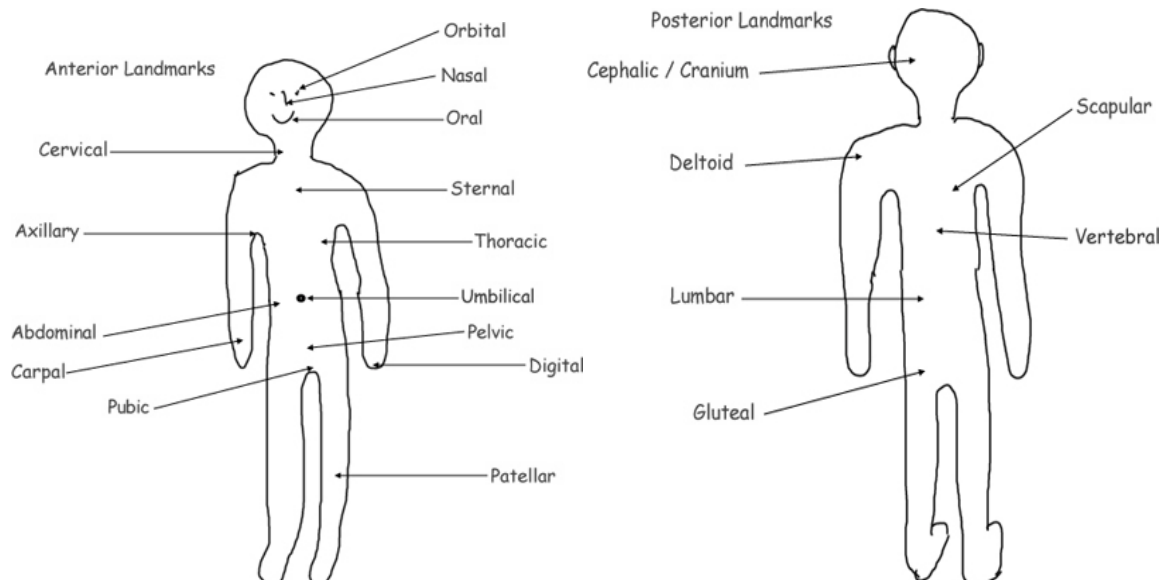
List the features of the Standard Anatomical Position

- body erect
- feet parallel
- arms hanging at side
- palms facing forward

Draw and Label Diagrams Illustrating the 14 major directional terms

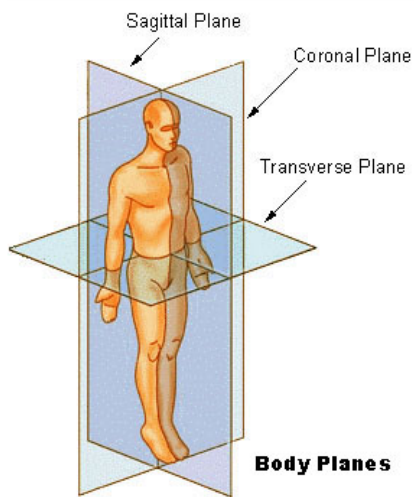


Given a Word Bank and Anatomic Diagrams please be able to identify the following external landmarks or body regions:

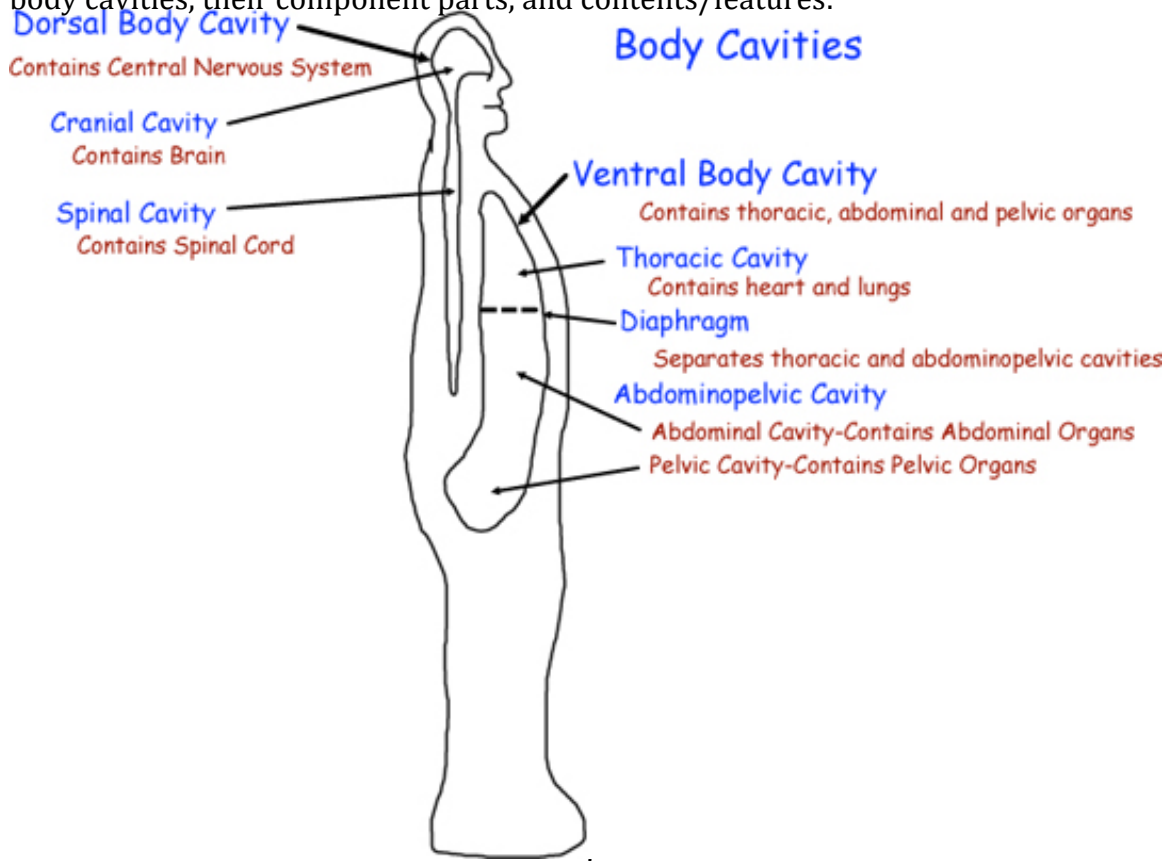


I will give you the diagrams labeled with letters and a list of terms with blanks in front of them—you will simply place the letter of the corresponding label in front of the correct term.

Given a diagram illustrating the three major body planes, please be able to label it with the correct terms

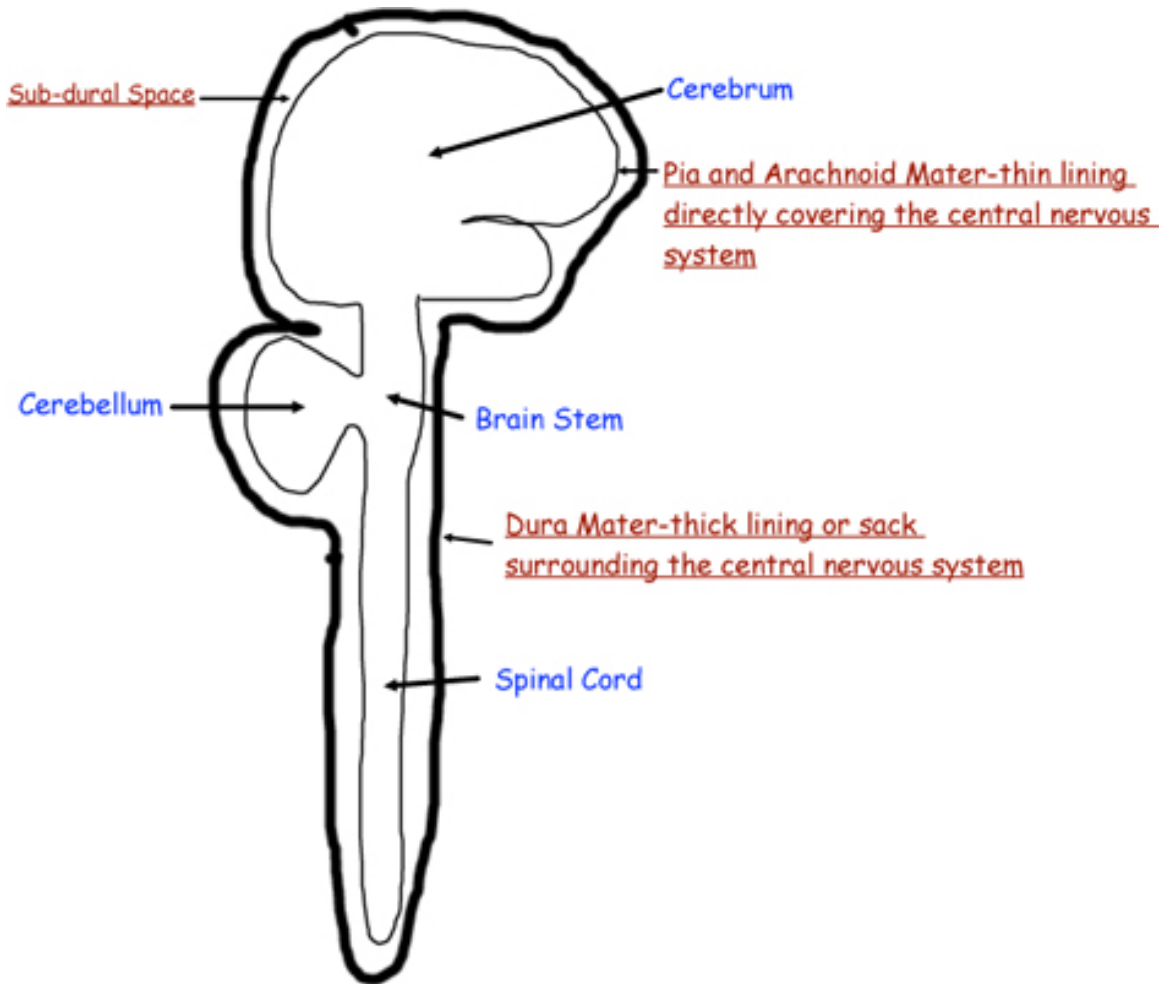


Given a Word Bank and Anatomic Diagrams please be able to identify the following body cavities, their component parts, and contents/features:



I will give you the diagrams labeled with letters and a list of terms with blanks in front of them—you will simply place the letter of the corresponding label in front of the correct term.

Given a Word Bank and Anatomic Diagrams please be able to identify the following components/features of the dorsal body cavity.



The components and features of the ventral body cavity will be tested on more thoroughly later in the year.

Also remember that I will be checking vocab and drawings—make sure all of these things are up to date.